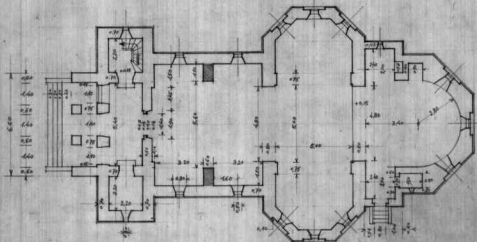
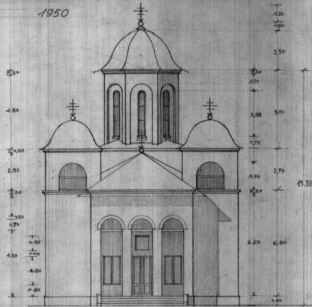
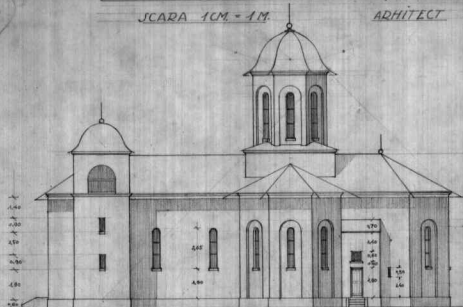




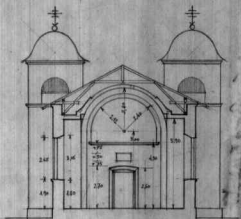
PROIECT DE BISERICĂ PE FUNDATII EXISTENTE GRĂNICESTI JUD. RĂDĂUȚI

SCARA 1CM. = 1M.

ARHITECT Șt. Dobry 1950

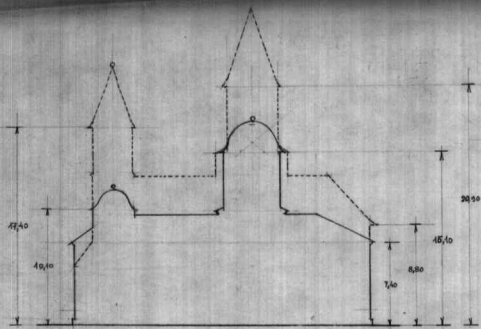


J.1 J.2 J.3 J.4

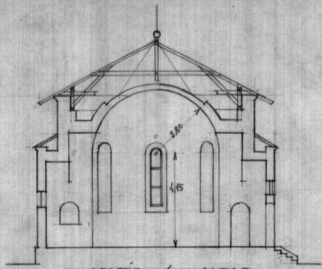


SECȚIE 2 SPRE ÎNTRARE

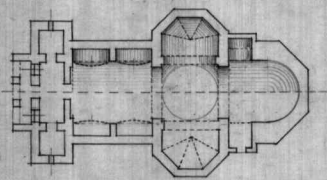
Handwritten notes and signatures on the right side of the page.



COMPARATIA ÎNTRU PROIECTELE I și II

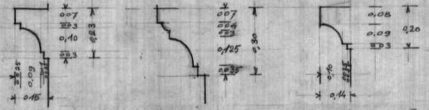


SECȚIE 4 ALTAR



PLAN BOLȚI

PROFIE CORNIȘE



CORP BISERICA ȘI
TURN CLOPOTNITĂ

TURLA

BAZA TURLA