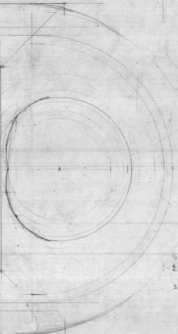
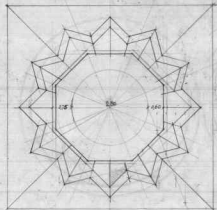
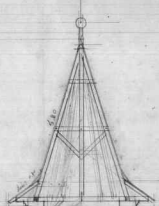
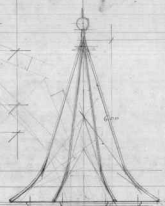
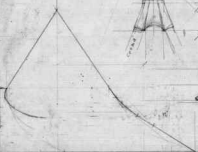
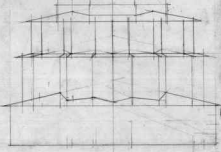


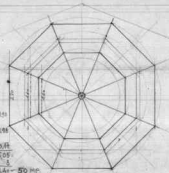
Selca - Sv.

1

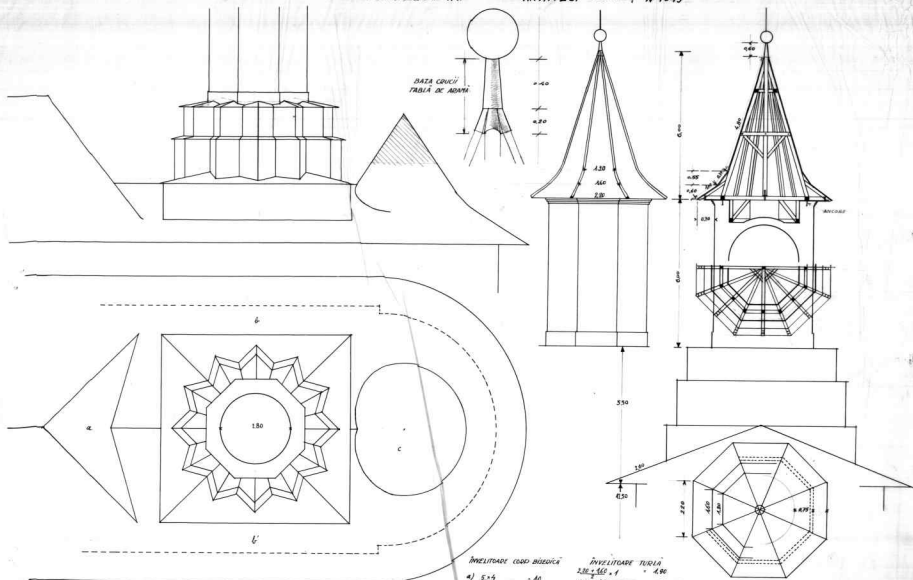


$5 \cdot 4$ mp. 10
 $2 \cdot 8 = 2 \cdot 6 = 4 \cdot 60$ mp. 42
 $3 \cdot 4 = (50 + 5) \cdot 2$ mp. 113

$11 \cdot 5 \cdot 3 \cdot 4 = 4 \cdot 25$
 $1 \cdot 1 \cdot 2 \cdot 2 \cdot 2 \cdot 2 \cdot 2 = 68$
 $1 \cdot 1 \cdot 2 \cdot 2 \cdot 2 \cdot 2 \cdot 2 = 576$
 $1 \cdot 1 \cdot 2 \cdot 2 \cdot 2 \cdot 2 \cdot 2 = 608$
 $1 \cdot 1 \cdot 2 \cdot 2 \cdot 2 \cdot 2 \cdot 2 = 80$ mp.
 Cone 68 * 8 = 52 ml.



BISERICA DIN SOLÇA - I. JUCEAVA
 PROIECT DE ACOPERIȘ LA TURLĂ
 SCARA 2CM = 1M. ARHITECT N. 1943



BATA CRUCII
TABLA DE ADAMI

ÎNVELITOARE COȘUL BISERICĂ
 a) $E \pm 5$ = 40
 b) $2 \cdot 8 \cdot 260$ = 4160
 c) $3,46 \cdot 6,90 \cdot 43$ = 10298
 6950 - 70 MR

ÎNVELITOARE TURLĂ
 $2,30 \cdot 560 \cdot 4$ = 5152
 $4,60 \cdot 430 \cdot 0,7$ = 1382
 $4,16 \cdot 5,25 \cdot 4,80$ = 1056
 $6,94 \cdot 8$ = 55,52
 6950 - 70 MR
 GROSSE 6,50 x 8 = 52 ML