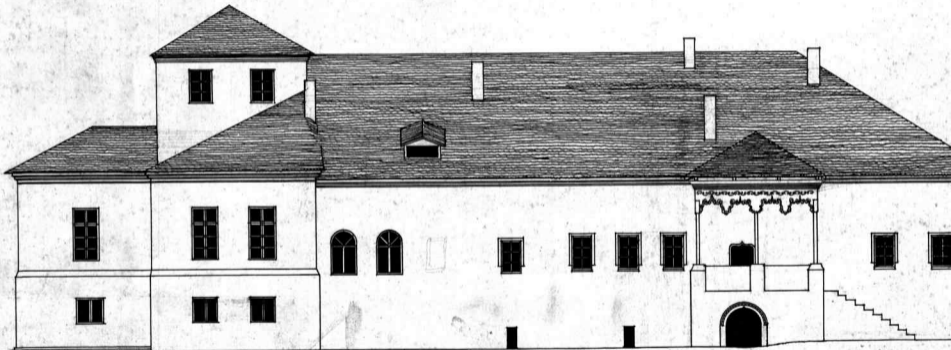


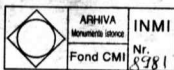
Pribești - conec Rosetti Bab.
Relevan, caa 1344 / St. Bab.



5406

Se reduce caa la jumătate

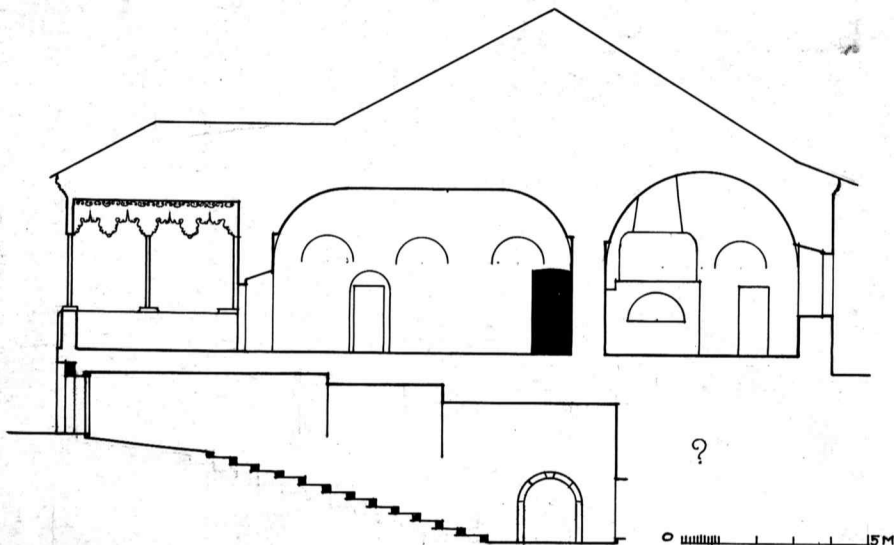
2



Părbesti - Conac

 SCURTUL TEHNIC AL PLANULUI ÎN SCALA DE 1:500
 TEHNICUL Nr. 5704

1964



?

 5M

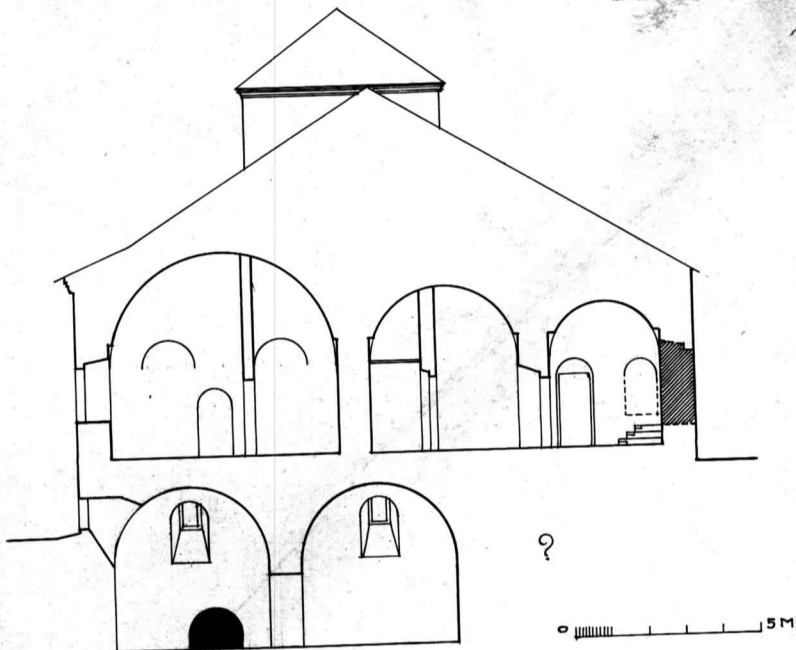
 4 cm
 7,6

Se reduce exact la jumătate

3.

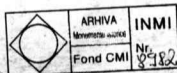
BIBLIOTECA NAȚIONALĂ A DOCUMENTELOR CĂRȚEȘTI
TEHNICUL N. 5705

1944



15 M

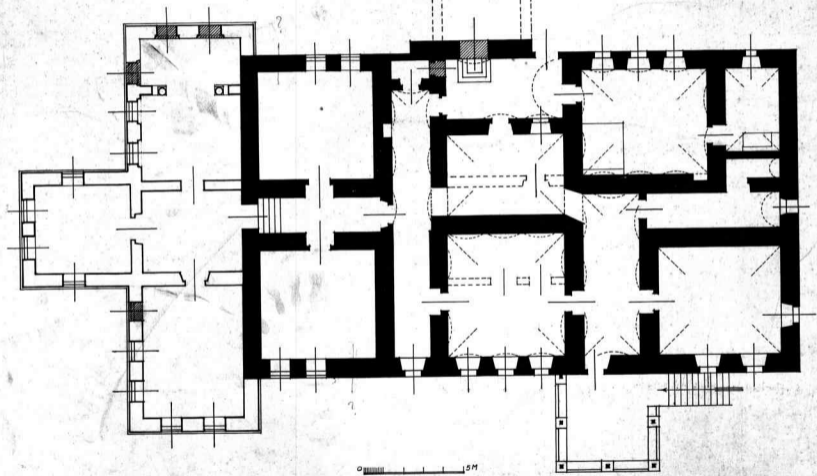
5 M



(Se reduce exact la jumătate)
Protești - case

4.

| | | |
|--|--------------------------|-------------|
| | ARSIVA SERVIZIO STUDI | INMI Nr. |
| | Fondo CMI | 1985 |



TECNICA N. 5708 / 1944 (St. Bals)

Prübesti - cura Rosetti Bals - Plan porter

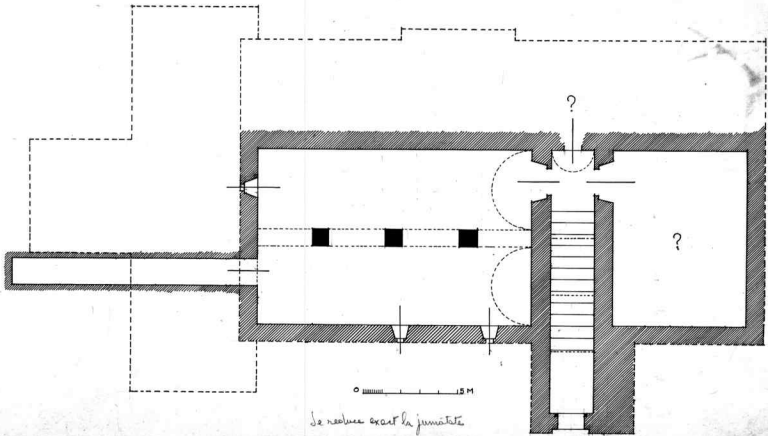
1944



ANEXA
Fund CMI 2304

Fig. 2/5 Casa din Pribesti J. Vaslui
Planul pivotei

5.



Se realizeaza exact la jumătate