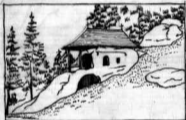




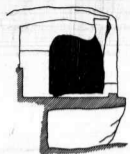
1.



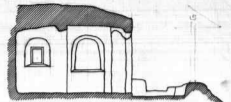
2.



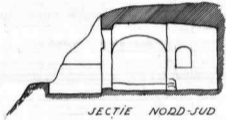
3.



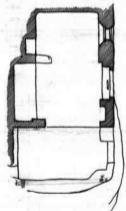
SECȚIE VEST-EST



SECȚIE SUD-NORD *Se aprobă soluția N°2. Sigurător*

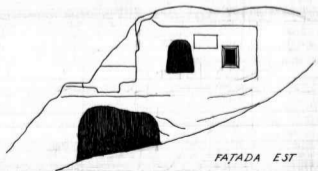


SECȚIE NORD-SUD



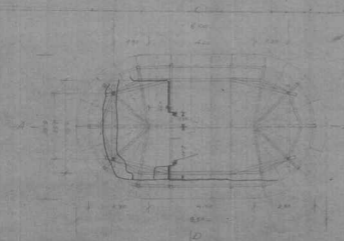
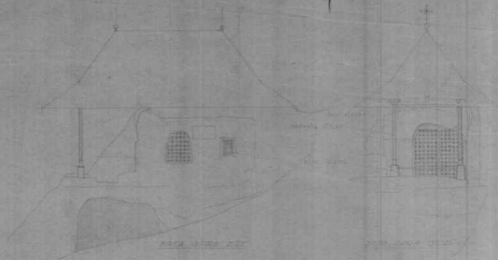
PEȘTERA SIIHAȘTRULUI DANIIL  
- MNȘT. PUTNA -

ARHIT. ȘT. BALȘ W.1948  
SCARA 2CM. = 1M.

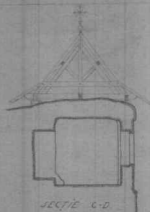
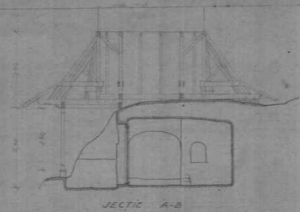


FAȚADA EST

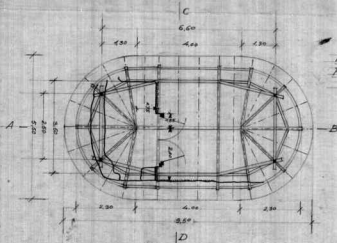
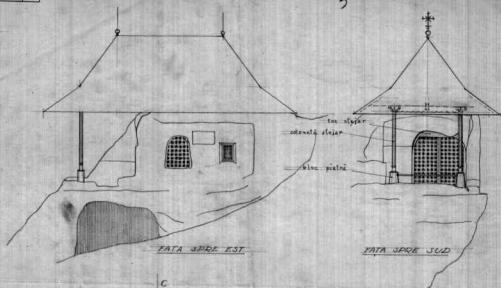
4



PROIECT DE ÎNȚEBE ARIPIȘTI  
 PENTRU ÎNȚEBE  
 - ÎNȚEBE PĂȘI  
 SCALA 1:500  
 1950

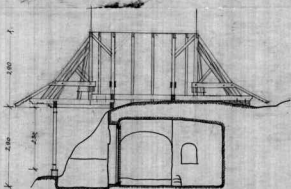


proiect executiv  
 20.10.1950  
 B. Brătianu

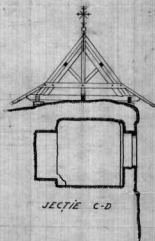


PROIECT PENTRU ADAPOSTIREA  
 PEȘTERII SIIHAȘTRULUI DANIL  
 - MNȘT. PUTNA -

SCARA 2CM x 1M  
 ARHIT. - ȘT. PUTNA, 1948.



SECȚIE A-B



SECȚIE C-D



Se vede punctul  
 20 din planșă 948

Arhitect  
 Putna

NO. 510

ARHITECTURA  
 ȘI CONSTRUCȚIA  
 ÎN ROMÂNIA