

J.F. NICULAE TG. OCNA

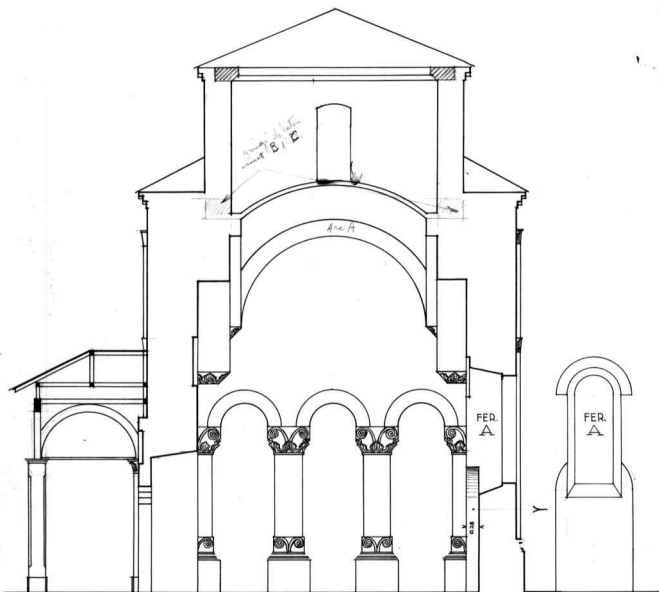
SCARA 0.02 = 1.00M.

PROECT PENTRU USA SUD

ARH. St. Balaș

3-VII - 1934

ARHITECTURA
 TEHNICĂ Nr. 1539



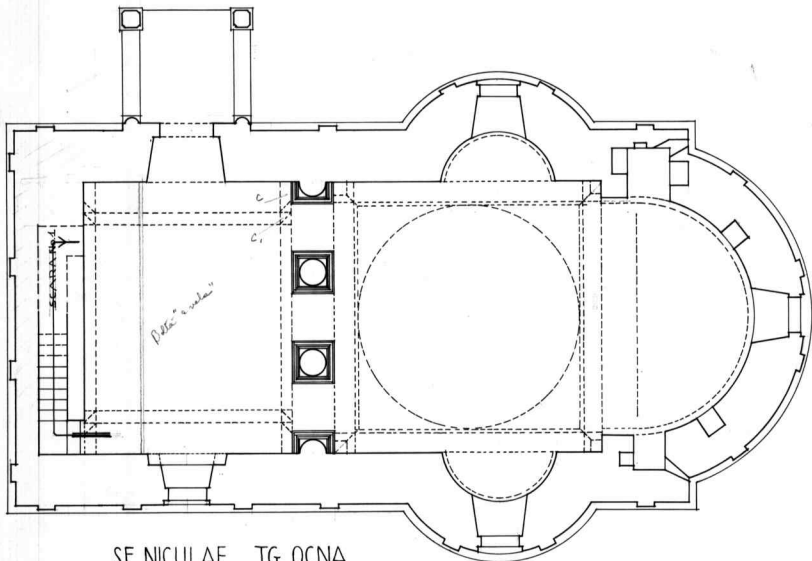
SF. NICULAE TG. OCNA

SCARA 002 = 1.00m

and. St. Dal
1973

Conservatorul Monumentelor Istorice
1068

N= 649/1984



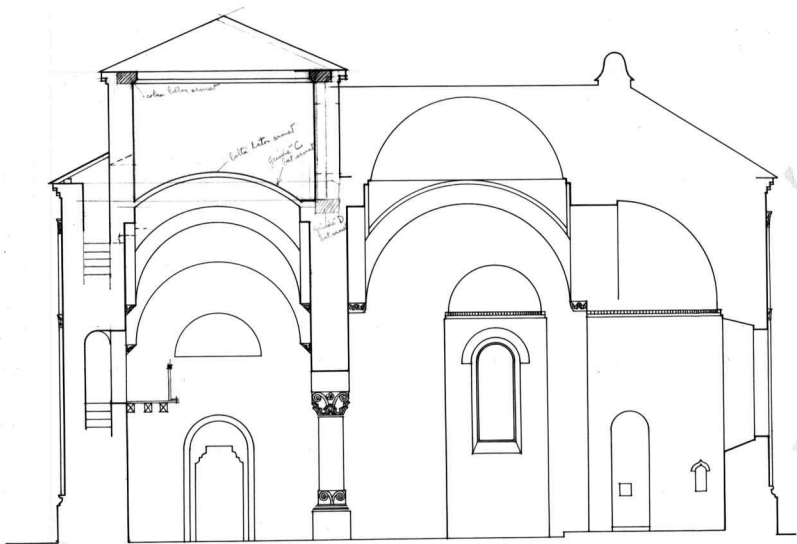
SF. NICULAE TG. OCNA

SCARA 002-100M

ant. St. Boly 1933

6

ARHITECTURA	INMI
	NR. 100
FUND. CMI	100

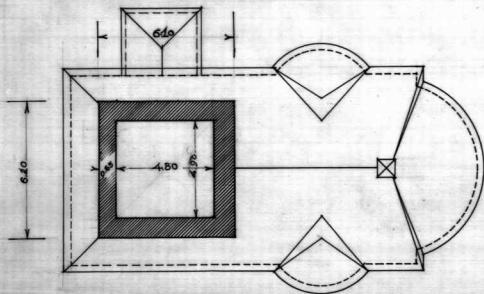
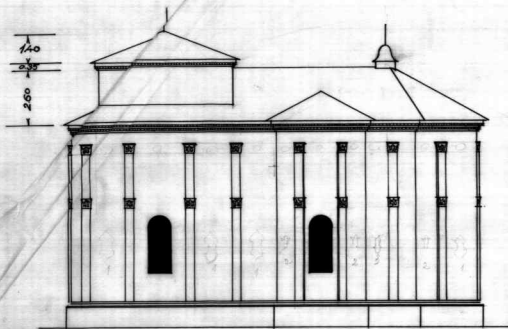


SF. NICULAE TG. OCNA

SCARA 002 - 1.00M

ark. St. D. 1953

TEHNICUL Nr. 1067

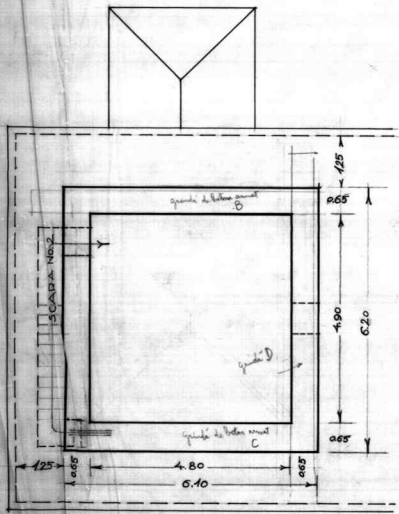
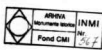


0 1 2 3 4 5 6 7 8 9 10 M.

SF. NICULAE TG. OCNA

nr. SF.B-4/1933

7



SF. NICULAE TG. OCNA PATUL TURLEI

SCARA 0.02=1.00M

arh. Sf. D. 67 1953