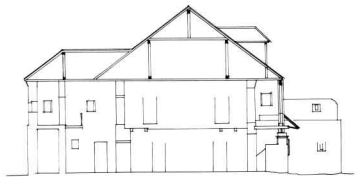
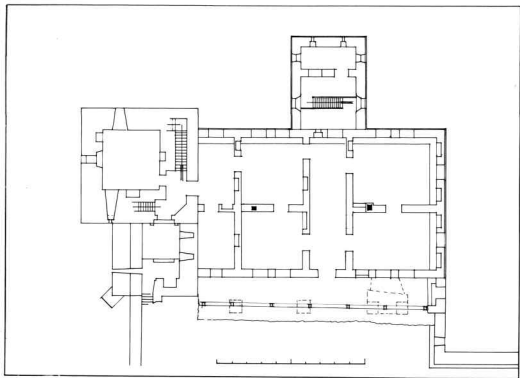


Arch. 2000-2001

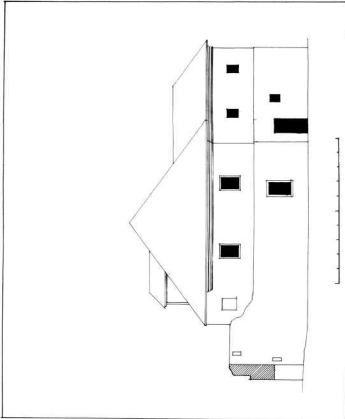
Handwritten signature or note in the bottom left corner.





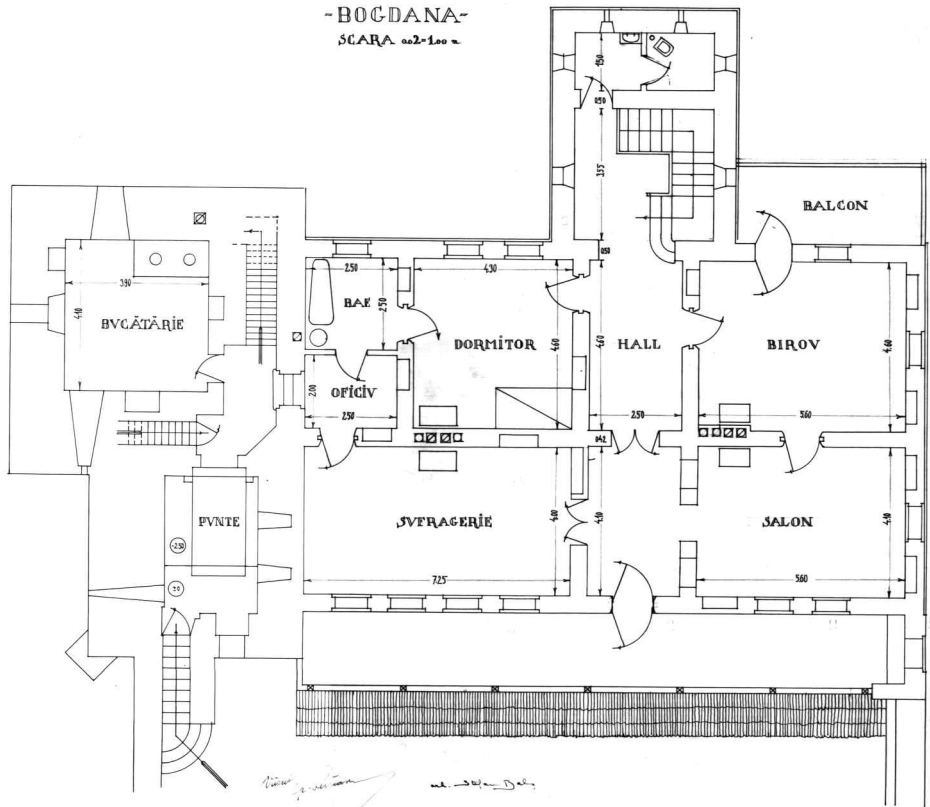
sketch of building

Handwritten notes in the bottom left corner, possibly indicating a reference or source.



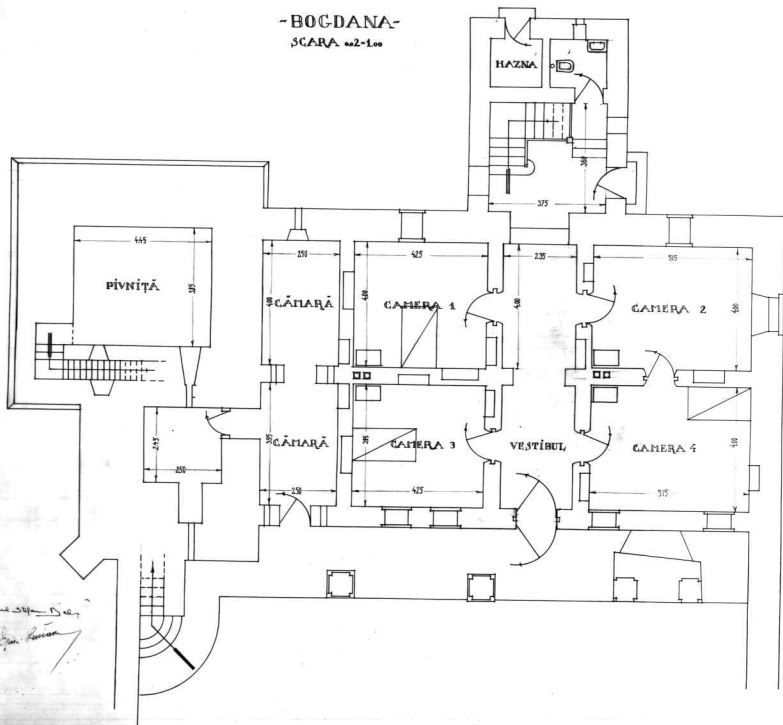
6

-BOGDANA-  
SCARA ca 2-100 m.



*Proiectant*  
*sc. 1:50*

-BOGDANA-  
 SCARA nr.2-100



nr. 2/10/100  
 Lucr. Arh. Bogdana