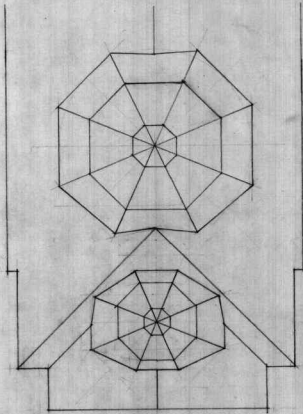
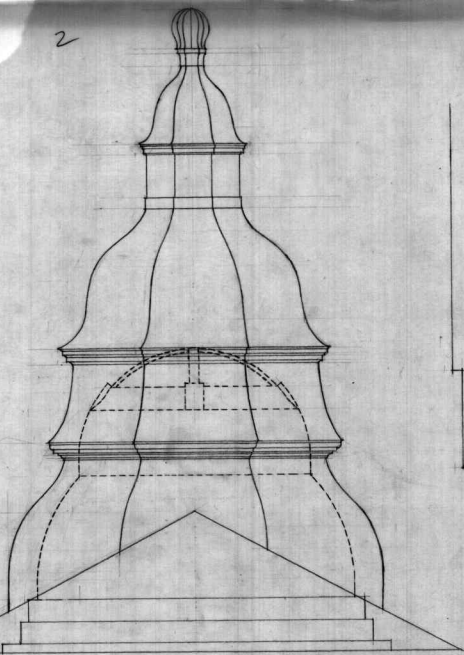
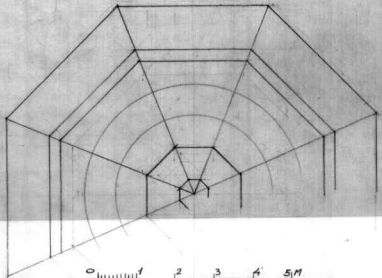


2



0 1 2 3 4 5M



0 1 2 3 4 5M

PROIECTIA NR. 3172

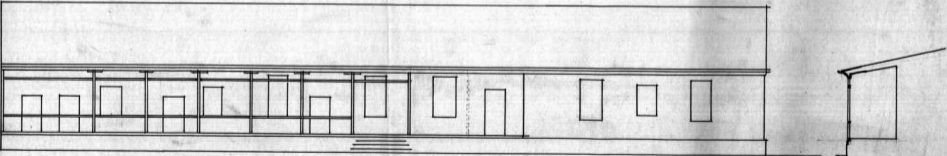
Febr. 1955

MNST. FRUMOASA - IASI
TURLA PRONAOSULUI

ARHIT. S. D. D. G.



5



→ PRIDVOR ÎNCHIS
CU ZID AȘI PRĂBUȘIT
ÎN PARTE ←

CLADIRE COLT N-WEST

CURTE M^{II} FRUMOASA IASI

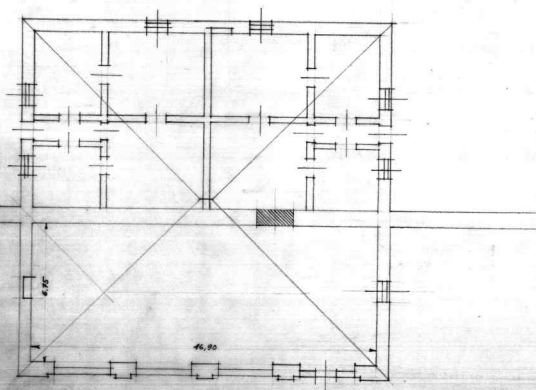
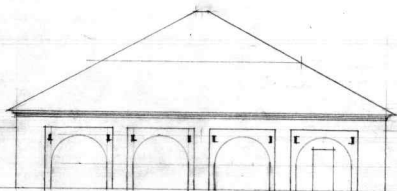
STAREA ACTUALA SCARA 1CM = 1M.

ARHIT. St. Buc,

COMBINAȚIA DE ÎNSUȘIRI ÎN STADIUL
TEHNICUL N. 4006

MNST. FRUMOASA - IASI
CLADIRE PE LATURA SUD

RELEVU 1945
ARHIT. S. ...
SCARA 0,01 = 1,00 M.

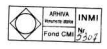


3181

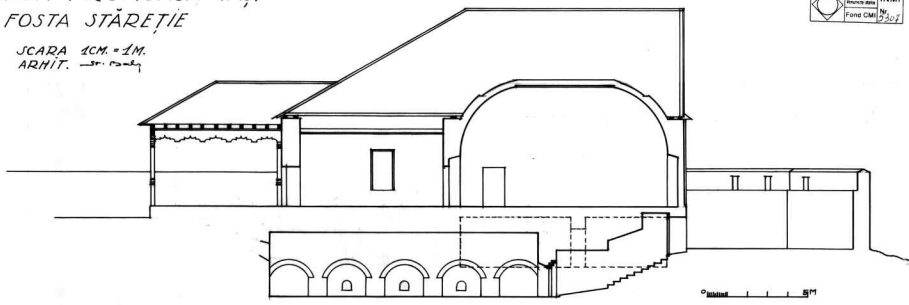
Plan. 1/20

MNST. FRUMOASA - IASI FOSTA STAREȚIE

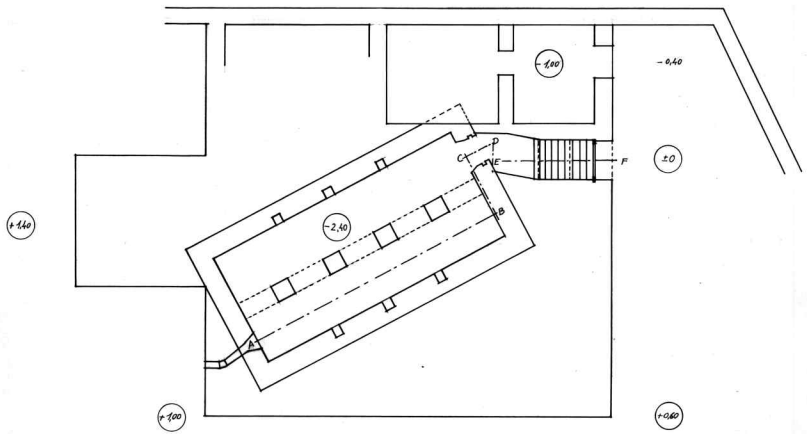
SCARA 1CM. = 1M.
ARHIT. — Dr. Pauleș



7



SECȚIE A-B-C-D-E-F



PLAN PIVNIȚE

8.

PROIECTUL N. 3180

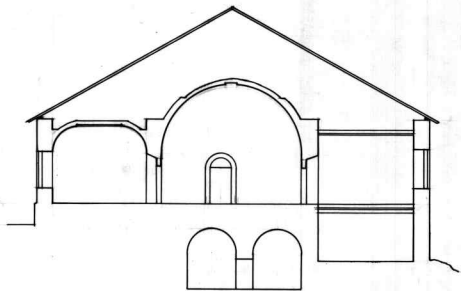
Templul 1785

MNST. FRUMOASA - IAȘI

FOSTA STĂREȚIE

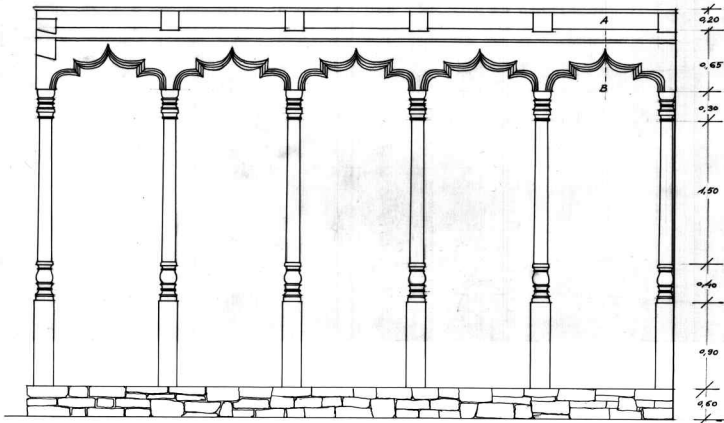
SCARA 1CM=1M.

ARHITECT Ș. Ș. 1924



0 1m 2m 3m 4m 5m

SECȚIE N-S



SECȚIE A-B

0.20
0.65
0.30
1.90
0.40
0.90
0.60

0 1m 2m 3m 4m 5m

PRÎDVORUL DE LEMN

11

PROIECT DE PROIECTARE
TEHNICUL N. 3176

ARHIT. INMI
Fund. CMI 3176

MN. ST. FRUMOASA - IASI
FOSTA STAREȚIE - RELEVU 1945

SCARA 1CM=1M

ARHIT. - I.P. P. 1945

