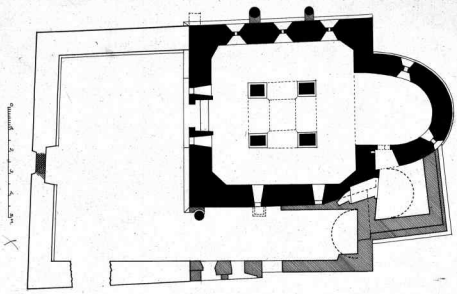
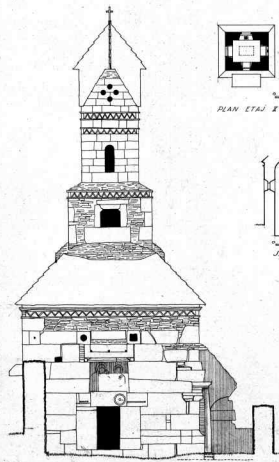


BISERICA DIN DENȘUȘ JUD. HUNEDOARA
 ARHIT. J. 004 - 1948 -

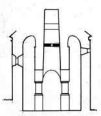


N

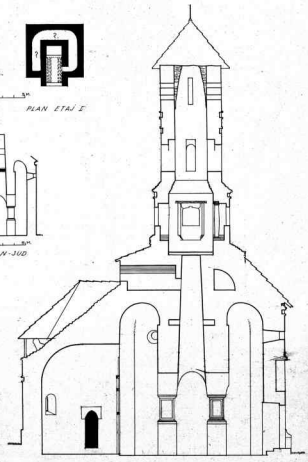


PLAN ETAJ II

PLAN ETAJ I

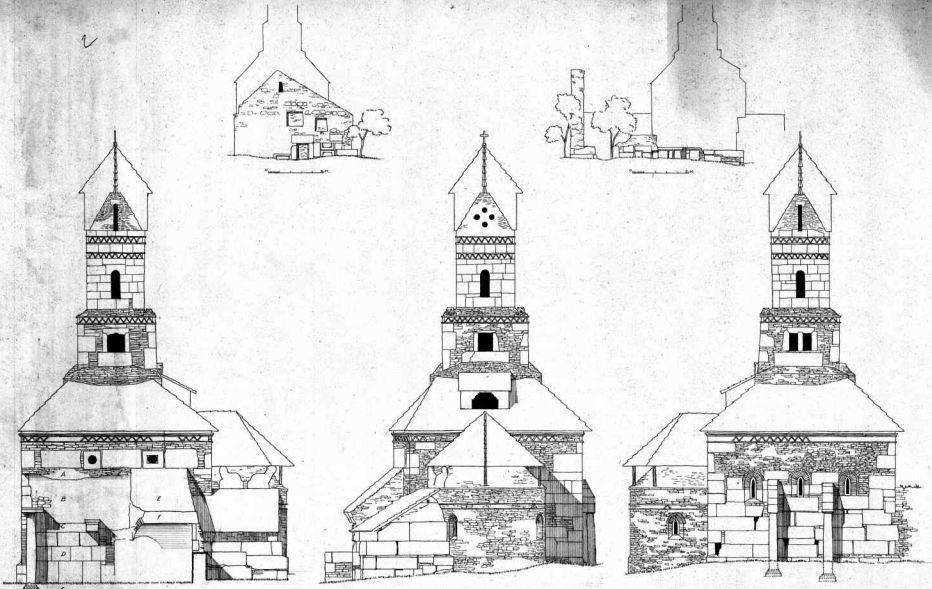


SECȚIE N-JUD



BISERICA DIN DENȘUȘ JUD. HUNEDOARA
 ARHIT. J. 004 - 1948 -

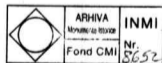
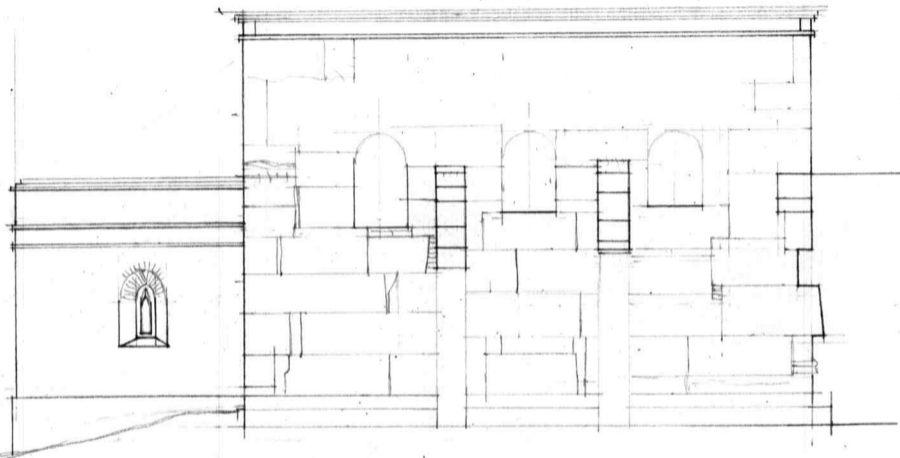




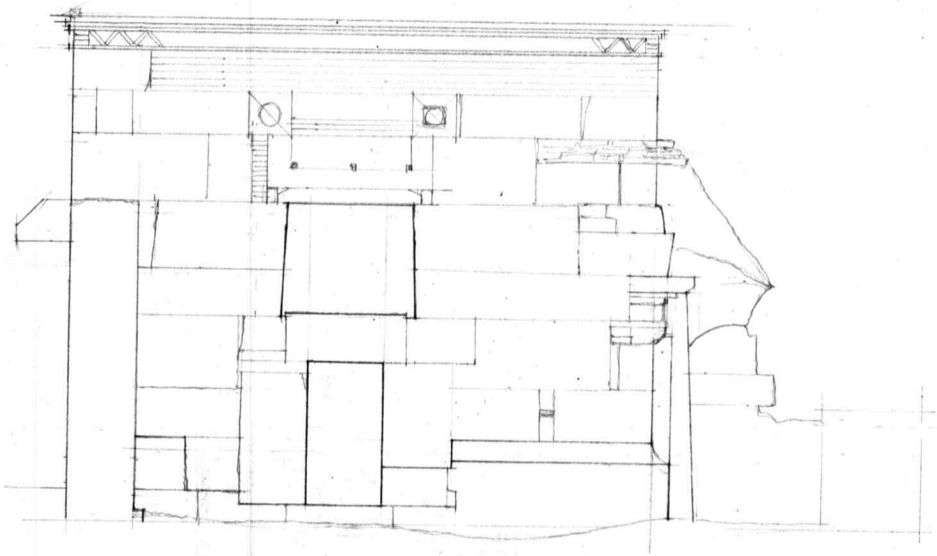
- A. MASTEA EXTRAORDINARII UNUI ACOPERIS DE PIATRA
- B. ZIDARIILE DE BOLONIA PRISTE LUCRATE
- C. MASTEA UNUI BULUI DE PIATRA CU RANURI ORIZONTALE
- D. PAVANENT CU BLOCURI REPAUZATE IN EDOCA MODERNA
- E. EXTENSIELE IN PANA LA ACOPERISUL DE PIATRA
- F. COLONIA BULTI DE PIATRA
- G. NIVELUL FOSTEI PARDOSII

BISERICA DIN DENBUS - JUD. HUNEDOARA
 SCARA 2 CM. = 1 M.
 ARHIT. ST. BALS - 1948

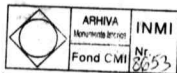




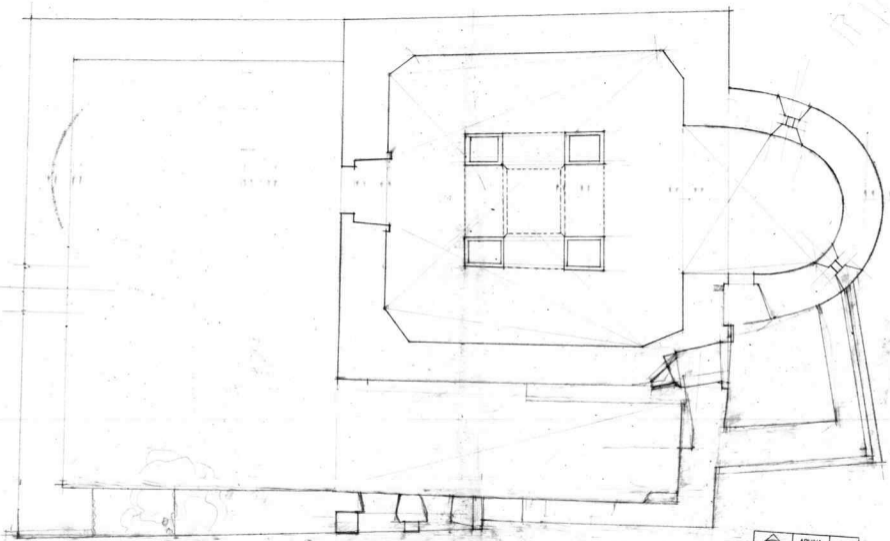
Densus - schițe releveu (St. Păls, 1948)



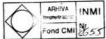
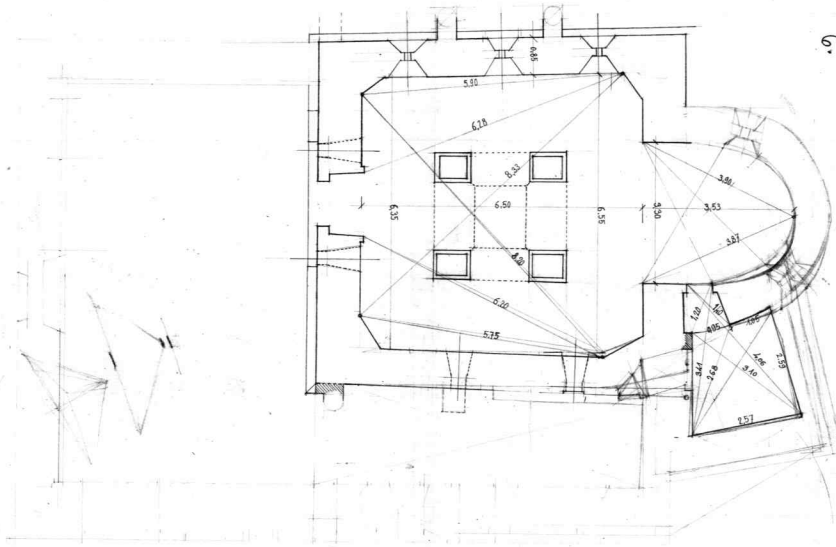
Densuş - Schito alleve (St. Balş, 1948)



5



Disegno - relativo a elevazioni, 1948, St. Balg



Densus - solita relevea, ft. Balz, 1948